



9447277700

SHAPECUT

- The sheet cutter cuts paper up to 480mm x 330mm and accurately positions the paper.
- It can feed 80-100 sheets at a time (according to the thickness of the paper).
- A wide range of printable self-adhesive materials are available, with a maximum contact pressure of up to 750g and a maximum cutting speed of up to 960mm/s, and the ability to mix cutting materials with different materials.
- The sheet cutter is the ideal equipment for many business areas such as copy shops, product labels, and office applications.



MODEL NAME

Cutting control system
Positioning sensor type
Maximum sheet size
Maximum cutting size
Maximum cutting force
Maximum paper weight
Control panel
Actual dimensions
Tools

CC- A3+ PRO

Digital Servo Motor
Digital Camera(CCD)
483mm x 330mm
475mm x 320mm
750g
350g
LCD with Keys(Buttons)
655mm x 494mm x 335mm
Single tool holder with one blade and one pen

SOFTWARE AND COMPATIBILITY

Connectivity USB interfaces
Software and compatibility **Vinylmaster PRO, PC only,**

POWER AND WORKING ENVIRONMENT REQUIREMENTS

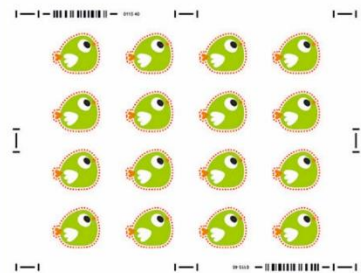
Voltage 100V-240V 50/60Hz
Power 150W
Operation environment Temperature + 5° to +35 °(Fahrenheit 41-95), Humidity 30%-75% (Non-condensing)

This parameter is subject to change without prior notice. The company reserves the right of final interpretation



Automatic Registration Marking System

Barcode & registration marks are detected automatically for accurate contour cutting



* Imported & Distributed By **SUMISHA**



Digital Signage Systems

CKRRA-35, Kavaradi Road, Pettah PO
Thiruvananthapuram 695024
Ph: 0471 2474770/ 2474711, 9447277700
info@dsssouth.in, www.dsssouth.in



LinkedIn

Google Reviews



★★★★★



Latex Printer | Photo Printer | Plotter | Service | Media | Laptop | Desktop | Software | Media | Service Work Station | AMC | Consumables | Spares | A3/A4 Printers & AiO's | Cutting Plotters | Lasers | Routers